

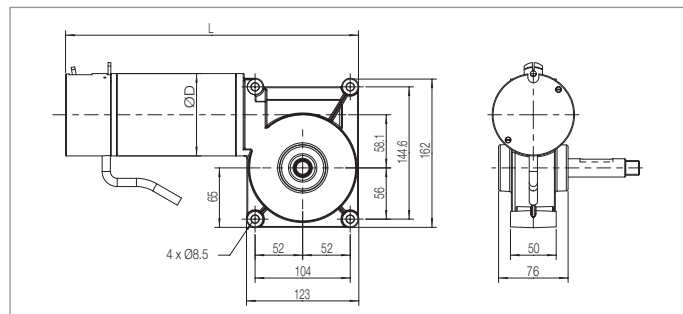
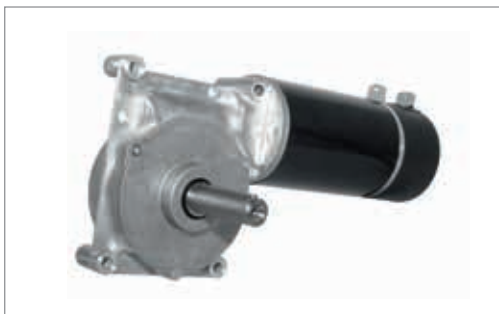
## Worm Gear Motor PMG

### Description

- DC motor with permanent magnet: 2- and 4-pole
- Single stage worm gear
- Quiet operation
- Long life time of carbon brushes
- Optimised efficiency level
- Compact design
- Easy to be installed and adaptable to application
- Electromagnetic holding brake with bowden cable or rotary unlocking (12/24 VDC, 2.5 – 5Nm)

### Typical Applications

- Wheel-chairs
- Stairlifts
- Electric powered compact vehicles
- Small vehicles
- Wheel drives



### Technical Information (further versions possible on request)

<b>Nominal voltage</b> (non-standard voltages on request)	[VDC]	12, 24, 36, 48, 60
<b>Nominal power</b>	[W]	100 – 800
<b>No load speed</b>	[rpm]	50 – 250
<b>Nominal torque</b>	[Nm]	5 – 60
<b>Motor diameter D</b>	[mm]	80, 90, 110, 125
<b>Gear: 1-stage reduction</b>	[i]	bronze: 25, 32, 50 plastics: 25, 28, 32.5
<b>Mounting</b>	-	frame, flange, base, etc.
<b>Drive shaft</b>	right, left, dual	with key, with flange, with thread, milled or teethed
<b>Insulation Protection</b>	Class F IP43	further versions on request
<b>Dimensions</b>	[mm]	L 295 – 332, depending on power, brake and encoder; shaft custom specific